

# NORTHWEST AREA

**1** **Anchor Inn Resort**  
6596 County Road 4, Spring Lake

- Direct Trail Access
- World-Class Hunting & Fishing
- Legendary Hospitality
- On/Off Sale
- Bar Open Thursday-Sunday

218-659-2718 • anchorinnresort.com

**5** **Max Mini Store**  
24 Hour Pay At the Pump  
50758 State Hwy 46 Squaw Lake, Junction Co. Rd. 4  
Gas - On & Off Road Diesel - Oil - Interstate Batteries  
Hardware - ATM - Grocery - Deli Express - Ice  
Propane Exchange  
(218) 659-4235  
M-F 6am-9pm • Sun 7am-9pm

**9** **"38" OUTPOST**  
General Store/Off Sale  
24 Hour Pay at Pump • Premium Gas/No Ethanol  
Oil • Belts • Spark Plugs • Sporting Goods • Hardware  
Bait & Tackle • Licenses • Propane • Pop • Snacks  
Open 7 Days a Week - 7 am to 9 pm • 218-327-0214  
12 Miles North On Scenic Highway 38

**12** **FISH TALES Bar & Grill**  
Monday - Sunday Open at 11 am (Closed Tuesday)  
PULL TABS • ON-OFF SALE  
BIGGEST BEER SELECTION IN THE AREA!  
Squaw Lake, MN fishtalesbarandgrill.com 218-659-4488

**HIGHWAY 46, SQUAW LAKE** **218-659-2131**  
**OPEN DAILY**

**HAPPY HOUR** Mon-Fri 4-6pm All Day Sunday  
**MEAT RAFFLE** Every Sat at 6pm  
**FULL BAR** On & Off Sale Pull tabs & Slot Machines

**Full Menu** Including Broasted Chicken  
**OPEN DAILY** 11 am  
**KITCHEN IS OPEN** Sun-Thurs until 8pm Fri-Sat until 9pm

**6** **Fresh Powder • Let's Ride!**  
Lodge • Restaurant • Cocktail Bar  
Open Everyday • Spectacular Scenery!  
• GROOMED TRAILS IN OUR BACKYARD  
• TOP Rated Ice Fishing  
• Camy Cabins  
• Fish Houses  
• Plowed Access  
Located in the Chippewa National Forest  
218-246-2560  
www.highbanks.com

**10** **BEAR & RIDGE PIZZA POURS**  
34810 US-2, Cohasset, MN (218) 999-5000

Open Daily 11am  
Kitchen Hours 11am - 9pm

Darts Full Bar  
8 Pull Tab Boxes  
Local Craft Beers  
All Sports Channels  
Five Star DIVE BAR



**3** **White Oak Inn and Suites & OutPost Bar and Grill**  
• Trail Outside the Door Go Anywhere  
• One Stop for All Your Dining Needs  
• Jacuzzi Suites • Pool & Hot Tub  
• Meeting Room  
Stay and Play at White Oak Inn and Suites and the OutPost Bar and Grill  
877-633-5504  
218-246-9868 • 218-246-9400

**NORTHOME WELCOMES YOU!**

**• MUNI ON & OFF SALE**

- Vikings and Wild games
- Pizza and snacks
- Parking in back
- Pull tabs

218-897-9501  
**• 24/7 LAUNDRY** City of Northome

No matter the season, No matter the reason, Lakewood is the place to stay!  
Cabins have in floor heating, screened in porches, gas grills and fireplaces!

**Lakewood Lodge**  
Call for Reservations: 218-659-2839  
Lakewood Lodge  
53026 County Road 35  
Deer River, MN 56636  
lakewoodlodge.com

**4** **RILEY'S CANNIBAL COUNTRY**  
• Full service bar & restaurant  
• Off Sale • Pull Tabs • ATM  
• Weekly Specials • Great Food  
46551 Riley Road, Deer River  
Facebook.com/rileyscannibaljunction (218) 832-3656

**8** **Northern Star Cooperative Services**  
• Ample Parking for Trailers  
• Accessible for Snowmobiles  
• Open 7 Days a Week: Sun to 10pm  
• Fresh Blends • Pizza Hot Express  
• North Country Deli • 24-Hour Fueling Service  
At the Junction of Highways 2 and 6 in Deer River. Cash Dividends Every Year!

**WINTER Fun**

# NORTHEAST AREA

**13** **TJ's LODGE & RESORT**  
Make MJ's on Swan Lake the hotspot for your ride, widely known for our half pound burgers and wings. We offer a full bar and restaurant and cabin rentals.  
Wednesday & Thursday • 4 pm - 11 pm  
Friday thru Saturday • Noon - 11 pm  
Sunday • Noon - 7 pm  
28179 East Shore Drive, Pengilly • 218-885-1093

**17** **Loon Point Resort**  
Full Log Cabins and a Lakehome  
Centrally located amongst the trail systems  
• Direct Access to Trails  
• Gas/Bar/Restaurants Nearby  
• Fireplaces, Cable TV  
• High Speed Fiber Internet  
www.loonpointresortmn.com



**14** **SMOKE ON THE WATER**  
94 Roosevelt Ave, Coleraine, MN 218-245-1662

PULL TABS  
FULL DRAFTED BAR  
WINE TASTING  
TAP BEER  
HAND CRAFTED M.A. SELTZERS

Monday through Thursday 11am-9pm  
Friday and Saturday 11am-10pm  
Sunday Noon-5pm  
Located in a fully renovated fire hall on the north side of scenic Trout Lake.

**18** **THE BALSAM STORE**  
Gas • Groceries • ATM • Deli Express  
24 Hour Pay At The Pump • Free Parking  
Ice • Bait • Propane • Lottery Tickets  
Hardware • Hunting Licenses • Liquor Store  
Hewitt Docks & Lifts & Pontoon Legs  
PARK & RIDE in the heart of greater downtown Balsam at the intersection of Scenic Highway 7 & 8  
Just off the Taconite on the Delbert Brandstrom Trail  
218-910-9595



**19** **LAWRENCE LAKE LIQUOR**  
On/Off Sale Liquor • Frozen Pizza • Event Room  
M-Th 2pm-10pm, F & S 2pm-Midnight, S Noon-10pm  
FREE TRAILER PARKING AVAILABLE  
SCENIC HIGHWAY 7, BOVEY • 218-245-2367



**20** **PETRICH'S STORE**  
(Lawson Trail)  
Gas • Oil • Spark Plugs • Groceries  
Snacks & Miscellaneous  
"Happy Snowmobiling"  
218-245-1310



**22** **Timberlake Lodge**  
Hotel | Event Center | Grand Splash  
• Direct Access to Trails  
• Large Parking Lot for Trailers  
• Pool & Hot Tub  
• Free Hot Breakfast  
• On-Site Restaurant  
218.326.2600  
www.timberlakelodgehotel.com  
144 SE 17th Street, Grand Rapids, MN

**23** **AmericInn BY WINDHAM**  
• Free Hot Breakfast  
• Large Pool & Whirlpool  
(218) 326-8999 • Americinn.com  
1812 S Pokegama Ave, Grand Rapids, MN

**24** **IM HOTEL**  
Newly renovated  
Spacious parking  
Complimentary hot breakfast  
(218) 327-1108 | www.imhoteltimberlake.com  
1702 Pokegama Ave S, Grand Rapids, MN

# NORTH AREA

**25** **FRONTIER SPORTS**  
• Pizza • Subs • Groceries  
• Non-oxo 91 • Bait • Tackle  
• Ammo • Docks • Gifts  
• Clothing • Beer • Wine • Liquor  
Open 6am-7pm Monday-Thursday  
6am-8pm Friday & Saturday  
7am-6pm Sunday  
frontiersportsmarcell@gmail.com

**28** **Bigfork Valley**  
Hospital • Clinics • Communities  
Where skill meets compassion.  
www.bigforkvalley.org  
(218) 743-3177

**26** **LAKESIDE LUMBER & HARDWARE**  
Marcell, MN 218-832-3300  
www.lakesidemarcell.com  
49208 State Hwy 38, Marcell, MN 56657

**29** **NORTH ITASCA ELECTRIC**  
OWNED BY THOSE WE SERVE  
As you ride Itasca ATV and snowmobile trails, be safe. Please watch for cooperative equipment.  
301 Main Ave. Bigfork, MN  
218-743-3131 or 800-762-4048  
www.northitascaelectric.com

**27** **TIMBERWOLF INN**  
NEW OWNERS  
THE AREA'S PREMIER NORTHWOODS DINING DESTINATION!  
Open daily. Check our Facebook or call 218-832-3300 for hours & reservations.  
Lodging • Bar • Restaurant  
Quality Homemade Food  
Off Sale • Pull Tabs • ATM  
• Trail access to our front door  
• Located on the Marcell Trail  
• 2 miles North of Marcell

**30** **Golf On The Edge**  
218-743-3626  
golffontheedge.com  
59851 Co. Rd. 261, Bigfork  
On Snowmobile Trails  
BAR & RESTAURANT OPEN YEAR ROUND!!  
Daily Drink & Food Specials  
9 Hole Regulation Course | 350 yd Driving Range  
Chip & Putt Practice Greens  
Pull Tabs | Etabs

**31** **EFFIE COUNTRY SERVICE**  
Gas/Diesel • Snowmobile Oil • Hot Coffee & Deli Food  
Off Sale Liquor • 24 Hour Gas/Towing  
Right on the Effie Connection  
After Hours 218-743-3616 - Open 365 Days  
M-S 6 am-9 pm & Sun 7 am-8 pm

# WINTER Fun

**28** **SNOWMOBILE OPERATORS SHOULD BE FAMILIAR WITH THE MEANING OF THE FOLLOWING TRAIL SIGNS**

**Informational sign:** indicates intersections or major changes in trail direction.

**Directional blazer:** indicates changes in trail direction.

**Reassuring blazer:** placed at intervals along the trail reassures users that they are still on the trail.

**Stop sign:** placed at a road or highway crossing indicates a snowmobile must come to a complete stop.

**No-snowmobiling sign:** indicates a trail or area where snowmobiling is prohibited.

**No-studded tracks sign:** indicates no metal traction devices allowed on trail.

**Two-way trail sign:** indicates trails with permitted two-way travel during nighttime hours within the public road right-of-way.

# WHAT YOU SHOULD DO IF YOU ENCOUNTER AN ACTIVE LOGGING OPERATION...

- Use **CAUTION** around logging activity near the trail
- Stay back a minimum of **200 feet** from any logging equipment
- Use any re-routes established
- Watch for Logging trucks hauling
- Comply with signs posted; they protect you and the operation
- Stay on trail; **DO NOT** approach any of the equipment

**YOU CAN SEE AND HEAR THEM, BUT THE OPERATOR MAY NOT SEE OR HEAR YOU!**

Itasca County Land Department • 1127 LaPrairie Avenue - Grand Rapids, MN 55744 • 218-327-2853

**GRAND RAPIDS AREA**  
Snowmobile Thru/Linking Trail System  
Snowmobile from your hotel/motel door to the Taconite Trail via the following Linking Trail Systems

- City Lake Trail
- City Trail
- DNR State Maintained Trail
- GIA Snowmobile Trail

**40** **Ray's Sport & Cycle**  
www.raysportandcycle.com

**SALES SERVICE PARTS APPAREL**

**GET OUT AND RIDE WITH RAY'S SPORT & CYCLE**

**YAMAHA POLARIS ski-doo**

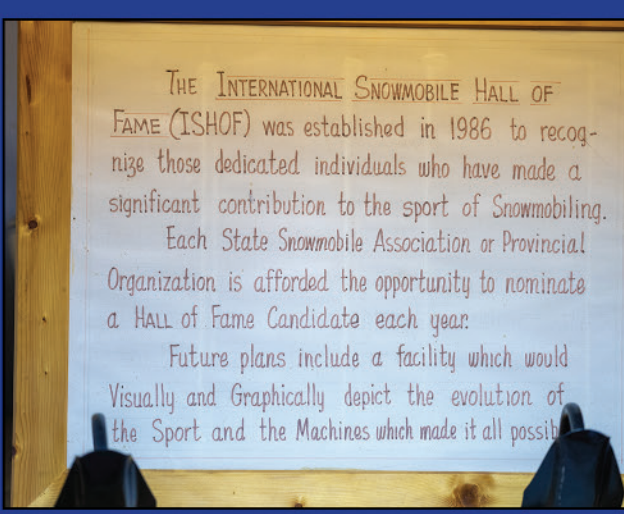
20980 US HIGHWAY 169 • GRAND RAPIDS, MN 55744  
(218) 326-9355  
MON - FRI 9:00 A.M. - 5:30 P.M.  
SAT 9:00 A.M. - 3:00 P.M.  
SUN - CLOSED

# GRAND RAPIDS AREA

**32** **grandItasca**  
Part of Fairview Health Services  
Clinic & Hospital  
RAPID CLINIC - Open 7 days/week  
Monday - Friday: 9:00 AM - 7:00 PM  
Saturday & Sunday: 9:00 AM - 5:00 PM  
EMERGENCY DEPARTMENT - Available 24/7  
1601 Golf Course Road | Grand Rapids, MN 55744  
www.granditasca.org | 218-326-3401

**33** **WILDWOOD RESORT**  
www.wildwoodresort.net  
218-328-5858

- Direct access to trail system
- 5 miles from Grand Rapids
- Beautiful location on Bass Lake
- Stay 2 nights and get a 3rd night FREE!



# SNOWMOBILERS' CODE OF ETHICS

- I will be a good sports enthusiast. I recognize that people judge all snowmobile owners by my actions. I will use my influence with other snowmobile owners to promote fair conduct.
- I will not litter on trails or camping areas. I will not pollute lakes or streams.
- I will not damage living trees, shrubs, or other natural features. I will go out only when there is sufficient snow so that I will not damage the land.
- I will respect other people's property and rights.
- I will lend a helping hand when I see someone in distress.
- I will make myself and my vehicle available to assist search and rescue parties.
- I will not interfere with or harass hikers, skiers, snowshoers, ice anglers, or other winter sports enthusiasts. I will respect their rights to enjoy our recreation facilities.
- I will know and obey all federal, state/provincial and local rules regulating the operation of snowmobiles in areas where I use my vehicle. I will inform officials when using public lands.
- I will not harass wildlife. I will avoid areas posted for the protection or feeding of wildlife.
- I will stay on marked trails or marked roads open to snowmobiles. I will not snowmobile where prohibited.

©2023 DNR Snowmobile Safety Training Manual

# SOUTH/SOUTHEAST AREA

**34** **COME FOR GAZ ZTAY FOR PIZZA**  
Open Daily 11 A.M. - 2 A.M.  
zorbaz.com

**37** **BLACKBERRY JUNCTION**  
Opens at 11 Thurs, Fri, Sat, Sun  
218-999-5009  
Hwy 2 & Dove Lane, Blackberry MN  
Full Bar/Pizza, Fresh Cut Fries, Appetizers and our Signature Burger/Sandwiches!

**35** **Itasca Driftskippers Snowmobile Club**  
"The Itasca Driftskippers Snowmobile Club proudly grooms 78 miles of trail in South Itasca County"  
We meet at 7:00 pm on the Third Tuesday of every month at the Itasca Driftskippers Club House, located 7 miles South of Grand Rapids on Highway 169.  
www.itascadriftskippers.com

**38** **SWAN RIVER RED EYE SALOON & EATERY**  
218-492-4512  
HWY 65 & HWY 2, SWAN RIVER, MN  
Opens at 11 AM 7 Days A Week  
Food • Drinks • Gas • ATM • Off Sale Liquor

**36** **Pokegama Lake Store**  
Non Oxy Gas/Gas Convenience Store  
Beer/Liquor • Bait  
2 blocks south of Pokegama Lake on Hwy 169  
Open 7 Days a Week  
Summer Hours: 9 AM - 10 PM Mon-Sun  
Winter Hours: 6 AM - 9 PM 7 Days A Week

**39** **Fred's Store**  
DON'T FORGET SNACKS FOR THE TRAIL  
SMOKED MEATS  
BEEF STICKS  
JERKY  
SAUSAGES  
GAS  
BEVERAGES  
218-492-4477

**38** **Itasca Driftskippers Snowmobile Club**  
33455 Wagon Wheel Court Rd  
Grand Rapids, MN 55744  
218-326-6727 (Clubhouse)  
218-244-1049 (Rusty Eichorn)

**DISCLAIMER: For Your Safety follow the stake-marked trail. Lake travel is not recommended unless snowmobilers receive direct information on ice conditions from the local snowmobile club. PLEASE STAY ON TRAIL.**

**Snowmobile Safety Tips**

Watch the weather and check trail conditions before riding  
• Don't ride in adverse weather conditions. Plan your trip and check the trails you'll be riding prior to departure. Check trail conditions and trail maps.  
• Always wear a quality DOT helmet and facemask. Wear layers of clothing to keep warm and dry. Snowmobile suits, bibs, jackets, gloves and mittens should cut the wind, repel water and keep you ventilated.  
• Never ride alone  
• Always ride with a friend on another snowmobile. This way if one machine is disabled, you have another to get help.  
• Dress for safety & survival  
• Always wear a quality DOT helmet and facemask. Wear layers of clothing to keep warm and dry. Snowmobile suits, bibs, jackets, gloves and mittens should cut the wind, repel water and keep you ventilated.  
• Slow down  
• Excessive speed is a major factor in many accidents, especially at night. To help avoid accidents, keep your night time speed under 40 MPH.

Stay to the right  
• Almost every trail is a "two way" trail. So stay to the far right of the trail, especially on hills and corners. Obey all trail signs and cross roadways with extreme caution.  
• Riding on ice - lakes & rivers  
• It is safest to avoid riding on lakes and rivers. If you must ride on ice, wear a life jacket over your outer clothing. Stay on the marked trail and stay off of ice that has moving water (current) near or under it - ice in these areas may be thin and weak.  
• Take a Snowmobile Safety Training Course!  
• Designed to educate the student on basic snowmobile operation, laws and regulations, and safety.  
©2024 State of Minnesota, Department of Natural Resources www.dnr.state.mn.us

# ITASCA COUNTY SNOWMOBILE MAP

**2024-2025**

VISIT GRAND RAPIDS IT'S IN MINNESOTA'S NATURE  
Edge of the Wilderness  
WWW.VISITGRANDRAPIDS.COM  
WWW.EDGEOFTHEWILDERNESS.COM

Grand Rapids "Through Town" Trails  
 IRA Civic Center  
 Director of Parks & Recreation  
 C/O Dale Anderson  
 Grand Rapids, MN 55744  
 218-326-2500

Avenue of Pines Trail  
 Squaw Lakers Snowmobile Club  
 C/O Cory Smith  
 P.O. Box 428, Squaw Lake, MN 56681  
 612-499-0225

Clearwater & Suomi Trails  
 38ers Snowmobile Club  
 C/O Doug Widen  
 36085 County Road 19, Deer River, MN 56636  
 612-868-6991

Taconite Trail, Circle L (portion), Bear Lake Trail, Tim Corey Trail  
 DNR-Parks & Trails  
 Area Supervisor  
 1201 E. Hwy 2, Grand Rapids, MN 55744  
 218-328-8984

Bushwacker Trail  
 Deer River Bushwackers  
 C/O Jeff Herfindahl  
 48828 U.S. Hwy 2, Deer River, MN 56636  
 218-246-8613

Keystone, Dirty Mike's, Diamond Lake Trails  
 Itasca Snow Rangers  
 C/O Darrel Hecimovich  
 26051 Oak Shore Drive, Bovey, MN 55709  
 218-245-1449

Driftskipper, Smith Creek, Little Pokegama, Shelter, Cook Lake Trails, Pokegama Lake Ice Trail  
 Itasca Driftskippers  
 C/O Rusty Eichorn  
 3345 Wagon Wheel Court Road, Grand Rapids, MN 55744  
 218-244-1049

Alborn-Pengilly, Blackberry, Charter Dam, Goodland, Pelkey, & Greenway Trails  
 Greenway Snowmobile Club  
 C/O Jon Korpi  
 30867 East Shore Drive, Pengilly, MN 55775  
 218-969-4297

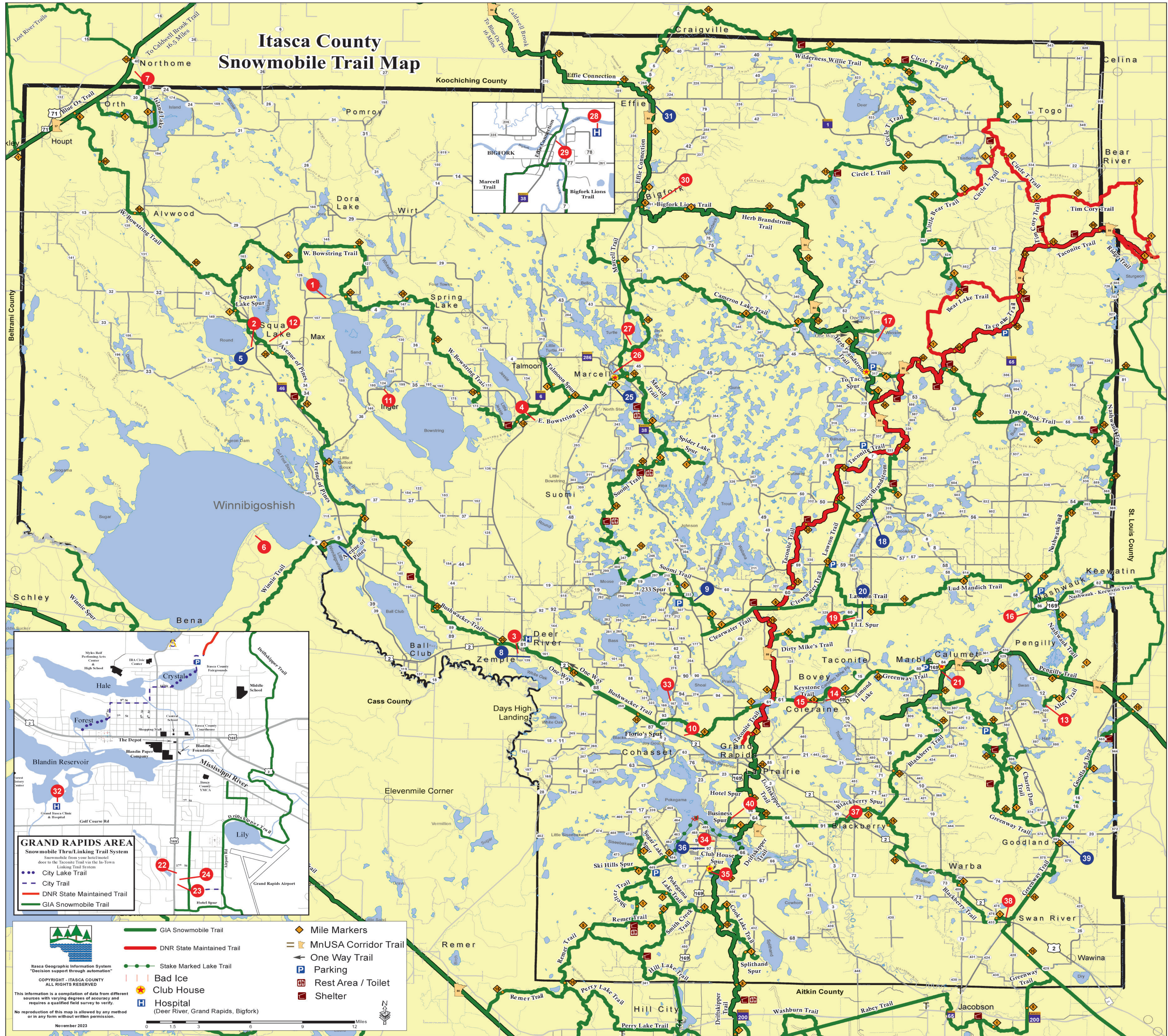
Lawron, Lud Mandich, Daybrook, Delbert Brandstrom, L.L. Spur, Nashwauk Trails  
 Lawron Trail Riders  
 C/O Jake Summer  
 P.O. Box 322, Bovey, MN 55709  
 218-360-1166

Bigfork Lions, Cameron Lake, East Bowstring, Effie Connection, Marcell, Wilderness Willie, Circle T Trails  
 Marcell Snow Drifters  
 C/O Mike Ellis  
 45973 Dock Lake Road, Marcell, MN 56657  
 847-344-8890

Scenic State Park, Cameron Lake, Herb Brandstrom, Little Bear and Circle L Trails  
 Swampsiders Snowmobile Club  
 C/O Derek Brandstrom  
 29730 Ca. Rd. 52, Bigfork, MN 56628  
 218-244-8081

Blue Ox, Caldwell Brook, Island Lake, West Bowstring Trails (Koochiching & Itasca Counties)  
 Northome Ridge Runners  
 C/O Jack White  
 P.O. Box 514  
 218-897-5764

Hill Lake, Perry Lake, Rabey, Washburn Lake, Remer Trails (Aitkin County)  
 Haypoint Jackpine Savages  
 C/O Dan Kingsley  
 218-697-7628 (h)  
 218-290-6202 (c)



- |                             |                                      |                            |   |                    |                            |   |
|-----------------------------|--------------------------------------|----------------------------|---|--------------------|----------------------------|---|
| 1 Anchor Inn Resort         | 6 High Banks Resort                  | 12 Fish Tails Bar & Grill  | 18 The Balsam Store                           | 23 AmericInn       | 29 North Itasca Electric   | 35 Itasca Driftskippers Snowmobile Club |
| 2 Leino's Riverside Pub     | 7 City of Northome                   | 13 MJ's Lodge & Resort     | 19 Lawrence Lake Liquor                       | 24 IM Hotel        | 30 Golf on the Edge        | 36 Pokegama Lake Store                  |
| 3 White Oak Inn & Suites    | 8 Northern Star Cooperative Services | 14 Smoke on the Water      | 20 Petrich's Store                            | 25 Frontier Sports | 31 Effie Country Service   | 37 Blackberry Junction                  |
| 4 Outpost Bar & Grill       | 9 38 Outpost                         | 15 Locker Room Bar & Grill | 21 Greenway Snowmobile Club                   | 26 Lakeside Lumber | 32 Grand Itasca            | 38 Swan River Red Eye Saloon & Eatery   |
| 5 Reily's Cannibal Junction | 10 Bear Ridge Pizza                  | 16 Wizard's Bar & Grill    | 22 TimberLake Lodge/<br>TimberLake Restaurant | 27 TimberWolf Inn  | 33 Wildwood Resort         | 39 Fred's                               |
|                             | 11 Lakewood Lodge                    | 17 Loon Point Resort       |   | 28 Bigfork Valley  | 34 Zorbas on Pokegama Lake | 40 Ray's Sport & Cycle                  |

Gas Available